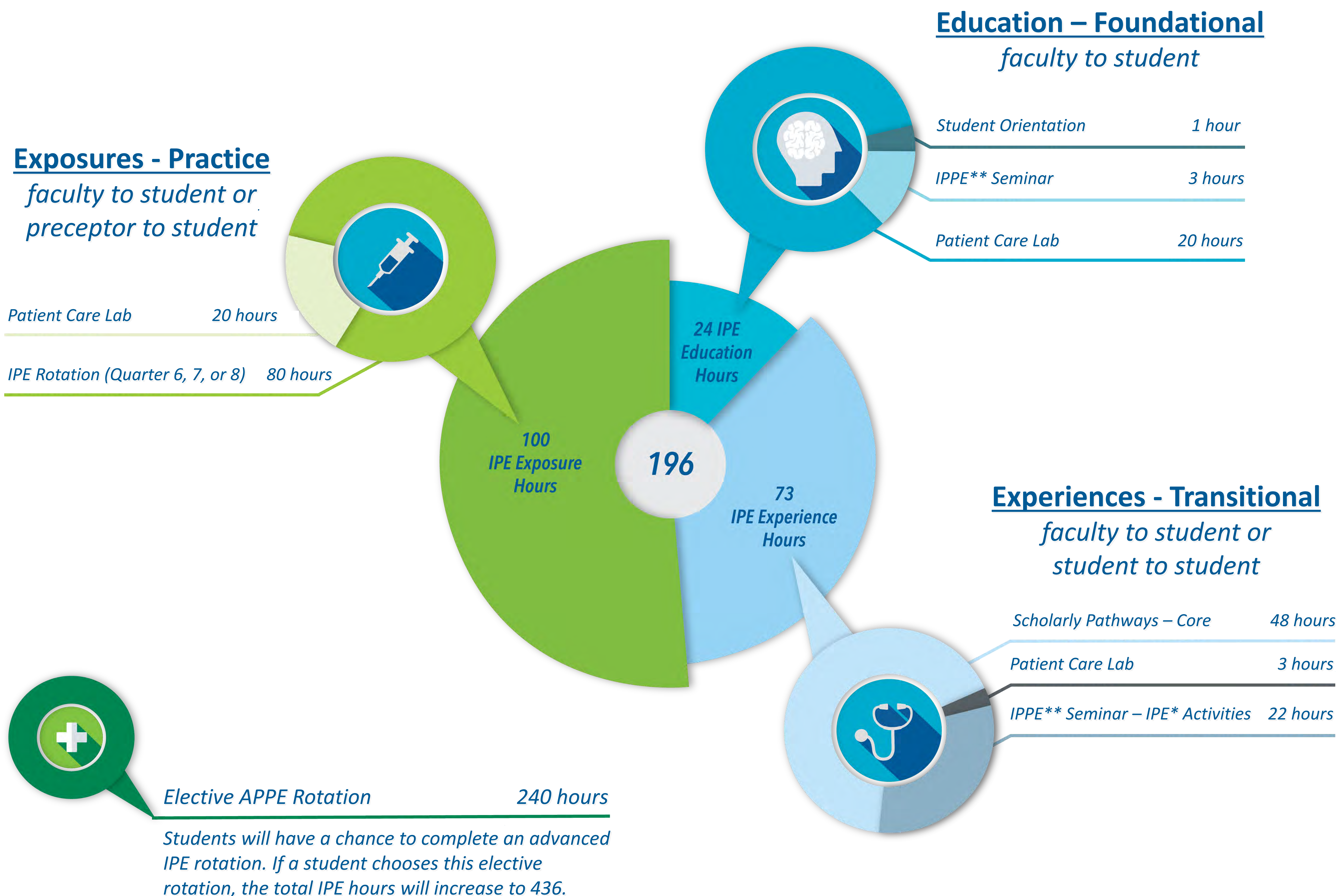


Strategically Integrating the Biopharmaceutical and Clinical Sciences in the IPE³ Program at a New School of Pharmacy

Sue Korek, MAED; Karen MacKinnon, BPharm, RPh; Rachel Kavanaugh, PharmD, BCACP; Stefanie George, PharmD, BCPS; Abir T. El-Alfy, PhD; Nathan Lamberton, PharmD, BCPS; Beth Krippendorf, PhD; George E. MacKinnon III, PhD, MS, RPh
School of Pharmacy, Medical College of Wisconsin, Milwaukee, WI

12 IPE Sessions Delivered in 2017-2018

School of Pharmacy Interprofessional Education (IPE³) Opportunities



* IPE – Interprofessional Education
** IPPE – Introductory Pharmacy Practice Experiences

Pharmacy, Medicine, and Anesthesiologist Assistant
Introduction to IPE*, teamwork, and communication in Student Orientation.

Pharmacy and Nursing (3 sessions)
1. Vital assessment stations in Patient Care Lab.
2. Case-based discussion in IPPE**
3. Medication reconciliation case-based discussion in Patient Care Lab.

Pharmacy and Medicine
Wet laboratory central nervous system stations in Human Anatomy.

Pharmacy and Medical Interpreter (2 sessions)
1. Taking a history of a limited English Speaking patient via a medical interpreter in IPPE**
2. Assessing a limited English speaking patient via a medical interpreter in Urban and Community Health Pathway.

Pharmacy and Anesthesiologist Assistant (2 sessions)
1. Cultural competence, teamwork in IPPE**
2. Simulation with mannequins on autonomic nervous system in Integrated Sequence: Principles of Drug Action and Pharmacogenetics.

Pharmacy, Medicine, and Nursing
Simulation with standardized patients on peripheral artery disease in Integrated Sequence: Renal & Cardiovascular.

Pharmacy, Dentistry, Nursing, and Physical Therapy
Health disparities case discussion in Urban and Community Health Pathway.

Pharmacy, Medicine, Physician Assistant, and Nursing
Interdisciplinary healthcare teams in Quality Improvement and Patient Safety Pathway.